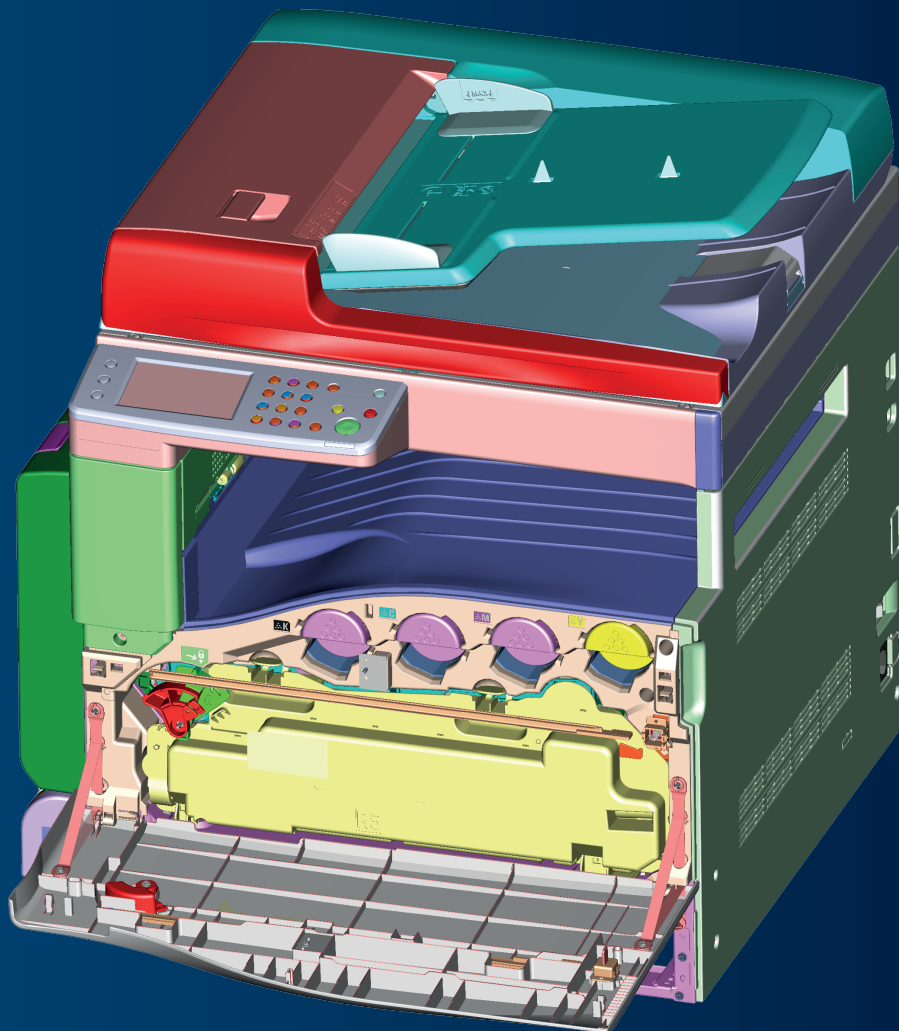


FUJI XEROX CASE STUDY

Fuji Xerox uses CST Studio Suite for EMC-compliant Printer Design



THE IDEA: MODERN MULTIFUNCTION PRINTERS

Founded in 1962, Fuji Xerox Co., Ltd. is a leading company in the document services & communications field. Underlying their solutions and services are their world-class office multifunction devices, printers and production printers that they develop and manufacture for worldwide distribution.

Modern multifunction printers include many electronic components (Figure 1) – often modular to ensure commonality – and these can interfere with each other causing electromagnetic compatibility (EMC) issues. In addition, electrostatic discharge (ESD) can affect the performance of individual components. Where EMC issues arise during testing, it is not always clear what the cause is. In order to better understand the mechanisms behind these and to find effective mitigation techniques, Fuji Xerox decided to use EM simulation with CST Studio Suite®.

THE CHALLENGE: SIMULATING EMC AND ESD ON A LARGE, VERY COMPLEX MODEL EFFECTIVELY

When prototyping the printer, one area where Fuji Xerox saw EMC issues was the user interface (UI) unit. Testing revealed that changing the number of contacts between the unit and the frame improved EMC performance, but didn't identify the coupling paths that caused issues. To simulate this effectively, Fuji Xerox needed to be able to simulate both the UI PCB and the frame of the printer. The variation in scale between the two meant that this would be a challenging task (Figure 2).

CST Studio Suite allowed the PCB to be imported as a 3D model and integrated into the metal frame imported from the CAD software. Thanks to the high-performance computing (HPC) capabilities of CST Studio Suite, the entire model could be simulated within a workday on the TSUBAME cluster at Tokyo Institute of Technology, with MPI cluster computing and GPU hardware acceleration. This showed the current flows within the device and explained why changing the contacts improved performance. The simulated EMI spectrum was compared to measurements and found to be in good agreement (Figure 3) Engineers could then use this information to improve the design of this device, by using a new countermeasure with a reduced EMI spectrum, and avoid similar issues with future devices.

Simulation was also used to test the ESD hardness of the LED print head. The ESD test set-up was recreated in CST Studio Suite, allowing different PCB designs to be analyzed. Simulation results agreed closely with measurements and allowed engineers to revise the PCB to reduce ESD susceptibility.

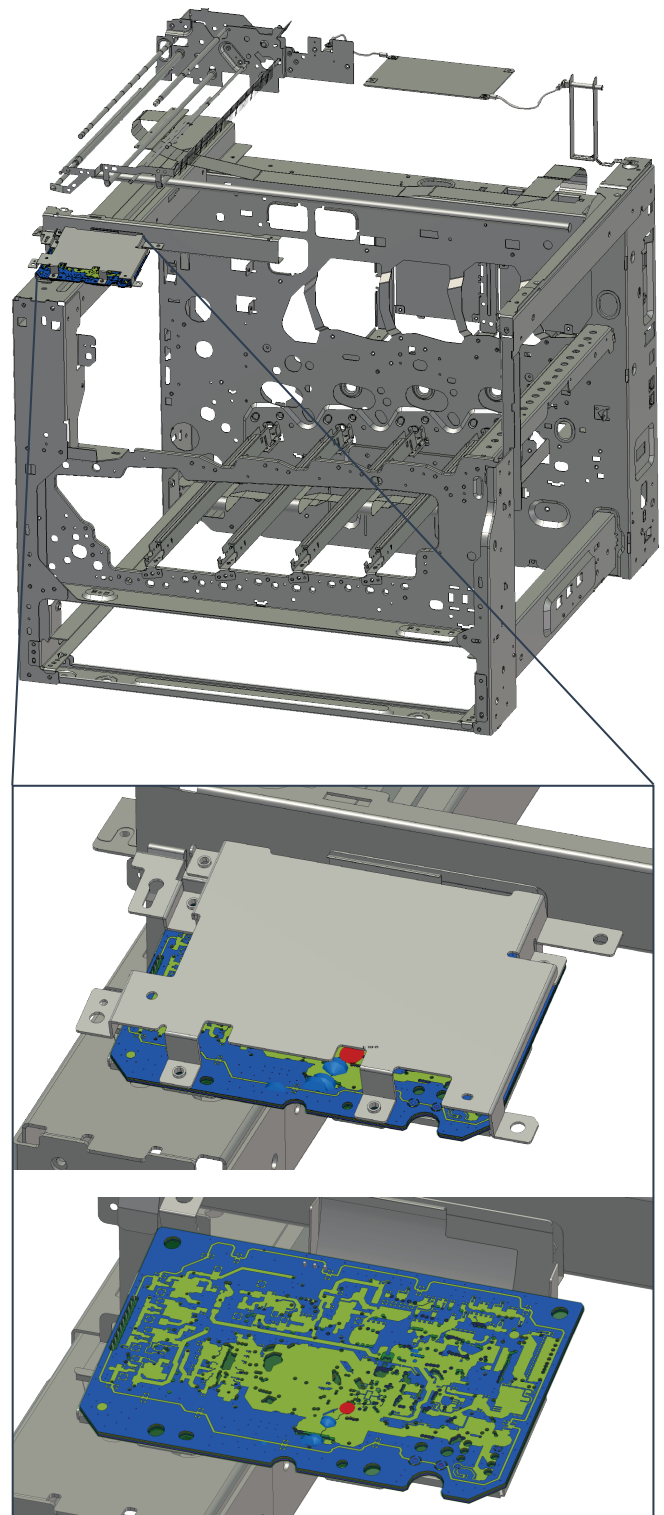


Figure 2: Variations of scale in a printer, from the metal frame to the individual PCB traces

THE RESULT: FAST SIMULATIONS, SHORTER DESIGN PROCESS

By allowing some measurements to be replaced by simulation, CST Studio Suite reduced the number of physical prototypes needed, shortening the design process. With simulation, Fuji Xerox engineers were able to predict EMC problems before constructing the prototype and identify the mechanism behind any that did arise, making them easier to mitigate.

“With a high usability and powerful features like EDA import and GPU acceleration, CST Studio Suite accelerates our development cycles by reducing the number of design iterations.”

— Mr. Makoto Ohkado, Device System Platform Development, Device Development Group, Fuji Xerox Co., Ltd.

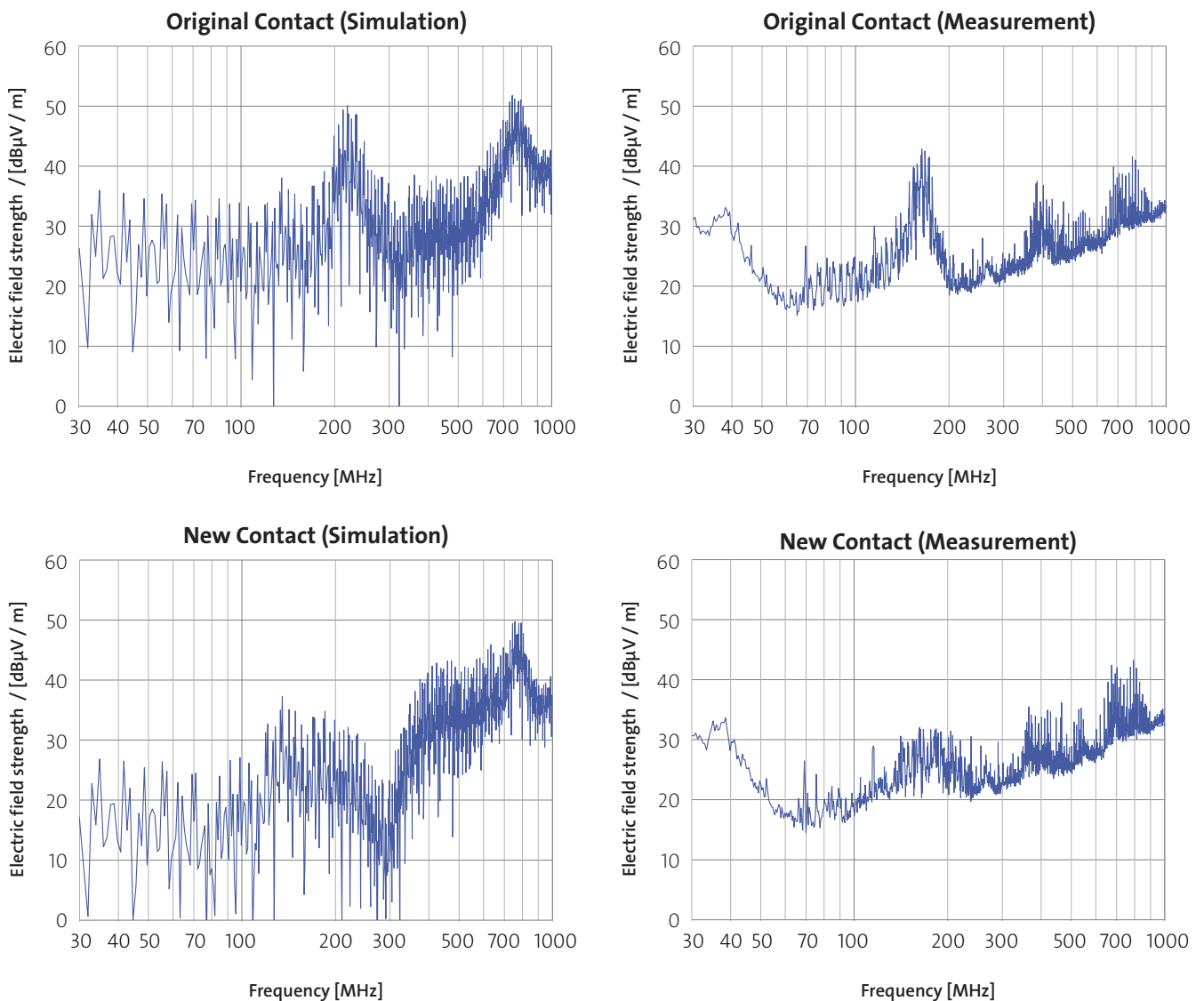


Figure 3: EMI spectrum at 3 m, with the old and new contact designs, comparing simulation and measurements.

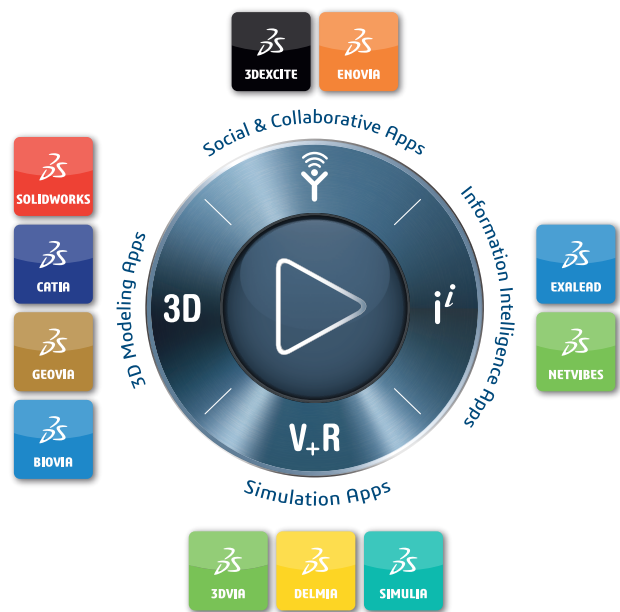
ABOUT FUJI XEROX

Since its establishment in 1962, Fuji Xerox has followed its basic philosophy of helping customers and society foster mutual understanding through better communications. The company revolutionized office work with Xerography; the technology that allows duplicating information on paper. Fuji Xerox has not only established an innovative business model focusing on a rental service – providing utility – rather than providing devices, but also offered a wide range of products and services to support customers in communications and creating values.

For more information, please visit
<http://www.fujixerox.com>

Our 3DEXPERIENCE® platform powers our brand applications, serving 12 industries, and provides a rich portfolio of industry solution experiences.

Dassault Systèmes, the 3DEXPERIENCE® Company, provides business and people with virtual universes to imagine sustainable innovations. Its world-leading solutions transform the way products are designed, produced, and supported. Dassault Systèmes' collaborative solutions foster social innovation, expanding possibilities for the virtual world to improve the real world. The group brings value to over 210,000 customers of all sizes in all industries in more than 140 countries. For more information, visit www.3ds.com.



©2019 Dassault Systèmes. All rights reserved. 3DEXPERIENCE®, the Compass icon, the 3DS logo, CATIA, SOLIDWORKS, ENOVIA, DELMIA, SIMULIA, GEOVIA, EXALEAD, 3DVIA, 3DSVIA, BIOVIA, NETVIBES, IPAVE and 3DEXCITE are commercial trademarks or registered trademarks of Dassault Systèmes, a French "société européenne" (Versailles Commercial Register # B 322 306 440), or its subsidiaries in the United States and/or other countries. All other trademarks are owned by their respective owners. Use of any Dassault Systèmes or its subsidiaries trademarks is subject to their express written approval.