

CEA (FRENCH ATOMIC ENERGY COMMISSION)

AEROSPACE & DEFENSE



Challenge:

To ensure that France's nuclear deterrent would remain effective into the future after the 1996 weapons testing ban, CEA/DAM (the French Atomic Energy Commission military applications division) committed to a simulation program that would enable less physical testing. CEA/DAM required a software code that for high-performance thermo-mechanical multiphysics simulation as well as accompanying studies on safety and security.

Solution:

CEA/DAM employed Abaqus FEA from Dassault Systèmes SIMULIA, based on its track record of highly accurate simulation results and ability to interface with proprietary codes. CEA collaborated closely with SIMULIA in a project aimed at customizing the architecture for parallel computing to optimize the use of Abaqus on the Commission's TERA 100 supercomputer.

Benefits:

Parallel computing on hundreds of cores is being achieved on a regular basis, irrespective of the method of calculation used.

Abaqus works in tandem with proprietary codes to help safeguard the robustness of the product throughout its lifecycle, from theoretical studies to manufacturing, performance, even to dismantling. This significantly reduces simulation time and enables CEA engineers to shorten their design cycles.

Ever since French citizens Pierre and Marie Curie discovered the radioactive properties of radium in 1898, nuclear research has been a driving force for technological innovation in France. The country's atomic energy commission, the Commissariat à l'Énergie Atomique et aux énergies alternatives (CEA), was established by General Charles de Gaulle after the Allied victory in World War II with the goal of pursuing nuclear applications in energy, medicine and defense.

The CEA/DAM (Military Applications Division) has since developed into one of the largest scientific computing complexes in Europe (one supercomputer used for defense, two others for industrial partners and researchers throughout the region), with more than 150 engineers working in the fields of software development, scientific computing, and computer architecture and operation.

Test ban spurs the use of simulation

As one of the three nuclear powers in NATO (along with Britain and the U.S.), France stopped real-world testing of its arsenal in 1996. However, to ensure that the country's nuclear deterrent would remain effective into the future, the CEA/DAM committed to a simulation program that would deliver high-performance, petaflop-class computing to its users.

"Our goal is to ensure the reliability and safety of our nuclear defense system through the use of simulation," says Max-André



Image 1. Abaqus simulations are performed on the French alternatives energies and Atomic Energy Commission (CEA)'s TERA 100 supercomputer, which supports maintenance of France's nuclear deterrent following the country's 1996 test ban.

Darizcuren, deputy head of the CEA Sciences of Simulation and Information Department (DSSI). Darizcuren spearheaded a 2004 project for managing the lifecycle of weapons through computer-aided engineering. "The idea behind this program is that, once you validate a simulation model, fewer and fewer physical tests are needed," he says.

The software code that CEA/DAM has used all along—for thermo-mechanical multiphysics simulation as well as accompanying studies on safety and security—is Abaqus FEA from Dassault Systèmes SIMULIA.

Abaqus proves its worth across the organization

CEA first began using Abaqus in two of its five research sites only, but was so impressed with the accuracy of simulation results and the benefits delivered to various projects that the software was adopted throughout the organization. "We were already using other Dassault Systèmes products (CATIA V5 and ENOVIA SmarTeam)," says Darizcuren, "so the acquisition of Abaqus Inc. by DS in 2005 provided a comfort level for further investment in the SIMULIA/Abaqus solution.

"We are committed to simulating all the processes involved in maintaining our deterrent," he says. "We have our own proprietary software for specific capabilities, but Abaqus is among the rare commercial codes we use with it."

"Abaqus helps us safeguarding the robustness of the 'product' throughout its lifecycle," says Darizcuren. "This goes from theoretical studies to manufacturing, performance, even to dismantling."

"Abaqus helps us safeguarding the robustness of the 'product' throughout its lifecycle."

— Max-André Darizcuren, deputy head of the CEA Sciences of Simulation and Information Department (DSSI)

CEA/DAM's earliest Abaqus simulations were largely 2D, and assumed axisymmetry of the product to keep model size down. However, test data demonstrated that the objects being simulated were not always axisymmetrical: asymmetric 3D models would more accurately capture the full picture in many instances.

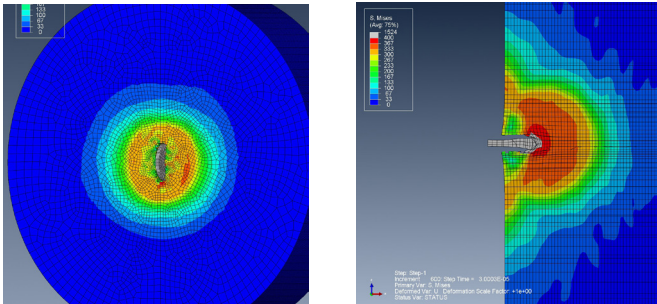


Image 2. Abaqus simulations of impact test on aluminum plate.

Next move: supercomputing

CEA was clearly in need of more compute power in order to manage the broad range of advanced simulations that would capture all such data and realistically predict multiple phenomena (models could potentially contain more than 100 million degrees of freedom). Then in 2010 the organization purchased a TERA 100 supercomputer (from Bull) dedicated to the deterrence only. At that time, it was the most powerful machine in Europe (it's still in the top 12 regionally, and ranks 35th worldwide).

CEA collaborated closely with SIMULIA in a project aimed at customizing the architecture for parallel computing to optimize the use of Abaqus on the TERA 100. "We want to maximize the productivity of the hardware infrastructure available for Abaqus simulations," says the CEA's IT infrastructure technical manager Francis Belot. "The TERA 100 is well tuned for our

own codes, which are very scalable (simulations often run on more than 4,000 cores) and the challenge was to develop the same level of performance with Abaqus on this particular machine over the long term."

The project tuned the Abaqus code to the new machine environment, helped the team master to use Abaqus on the CEA/DAM infrastructure, determined the limits of model size on that infrastructure and optimized the number of cores used (generally between 64 and 256) per model type. Improvements have been realized in accuracy/validity of the models, multiscale intensive simulations, and increasing use of full 3D models.

The knowhow acquired operating TERA 100 is being shared across two other CEA supercomputers, one used for European research and the other for a dedicated industrial partner.

"We've now significantly increased the performance of Abaqus on the TERA 100," says Darizcuren. "We're achieving parallel computing on hundreds of cores on a regular basis, irrespective of the method of calculation used. This significantly reduces simulation time and enables CEA engineers to shorten their design cycles.

"We hope to maintain our technical collaboration with Dassault Systèmes in the future in order to ensure that CEA achieves the targeted models that are key for our program," he says. "Going forward, it is clear that we will need Abaqus to scale on even more cores."

To that end, CEA will be bringing a TERA 1000 machine online in 2017, a step on the road map to exaflop range. "The demand for increasingly powerful simulation is growing fast across every industry," says Darizcuren. "From the success we are seeing with our collaboration with SIMULIA, we are certain that Dassault Systèmes will be identified as a key player in high-performance computer software in the future."

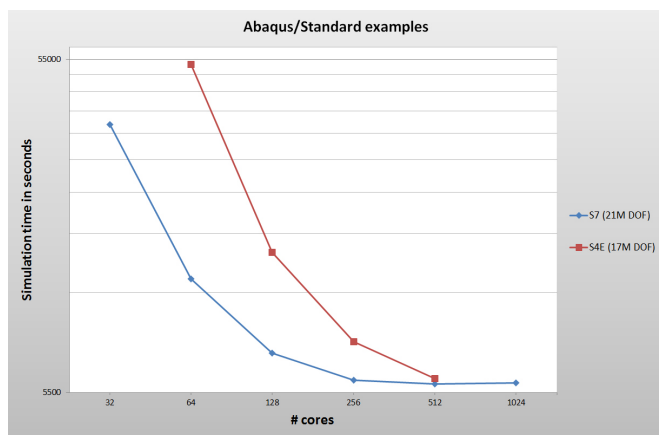
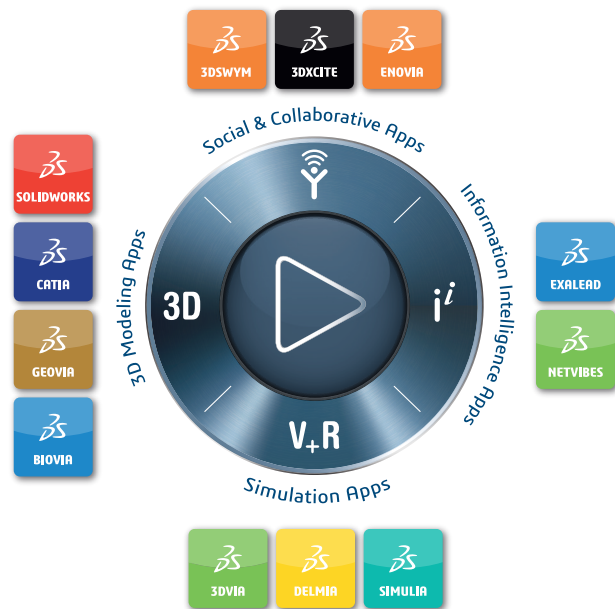


Image 3. Graph showing overall time needed to run two different Abaqus/Standard models (S7 and S4E) on the TERA 100 supercomputer, versus the number of computer cores used. "DDL" = Degrees of Freedom. For implicit solvers, the scalability is linked to many factors, such as memory availability, speed of input/output, "density of stiffness matrix and so on. In these particular examples, Abaqus shows runtime gains on up to 512 cores. The sweet spot (the optimized number of cores used/ time run) lies between 128 and 256 cores.

Our 3DEXPERIENCE Platform powers our brand applications, serving 12 industries, and provides a rich portfolio of industry solution experiences.

Dassault Systèmes, the 3DEXPERIENCE Company, provides business and people with virtual universes to imagine sustainable innovations. Its world-leading solutions transform the way products are designed, produced, and supported. Dassault Systèmes' collaborative solutions foster social innovation, expanding possibilities for the virtual world to improve the real world. The group brings value to over 170,000 customers of all sizes in all industries in more than 140 countries. For more information, visit www.3ds.com.



©2014 Dassault Systèmes. All rights reserved. 3DEXPERIENCE, the Compass icon and the 3DS logo, CATIA, SOLIDWORKS, ENOVIA, DELMIA, SIMULIA, GEOVIA, EXALEAD, 3D VIA, BIOVIA, NETVIBES, and 3DXCITE are commercial trademarks or registered trademarks of Dassault Systèmes or its subsidiaries in the U.S. and/or other countries. All other trademarks are owned by their respective owners. Use of any Dassault Systèmes or its subsidiaries trademarks is subject to their express written approval.